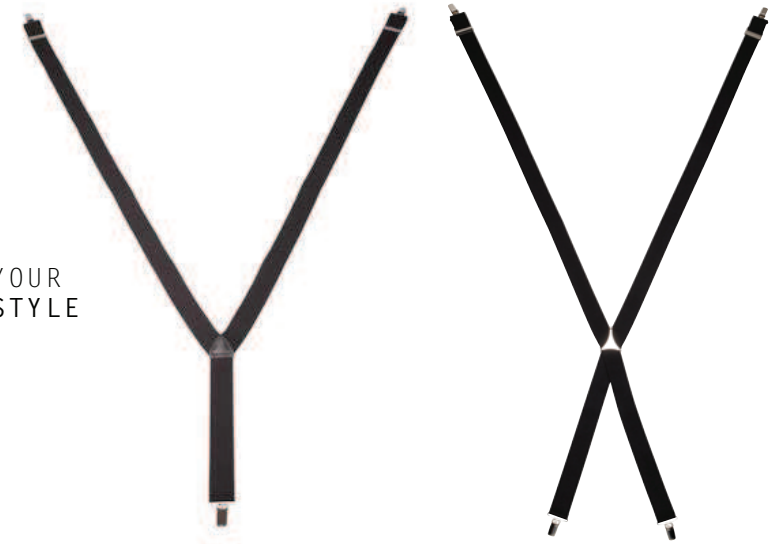




BRPLA135 PLAIN Y-BACK BRACES, NAVY, WITH NICKEL CLIPS

**BRACES
COLLECTION**
 AUSTRALIAN MADE
 USING BELGIAN
 WEBBING

STEP 1
 SELECT YOUR
 BRACES STYLE



Y-BACK STYLE
OPTION ONLY AVAILABLE FOR
35MM WIDTH

X-BACK STYLE

STEP 2
 SELECT YOUR
 END TYPE



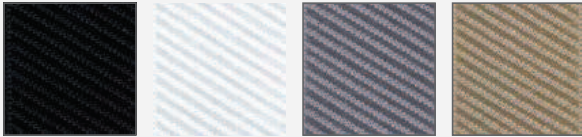
NICKEL CLIPS



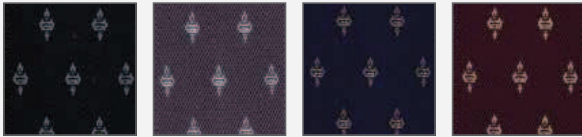
LEATHER BUTTON ENDS
OPTION ONLY AVAILABLE FOR
35MM WIDTH

STEP 3

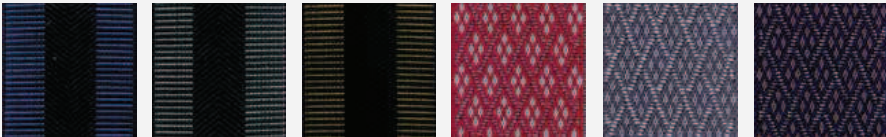
SELECT YOUR BELGIAN BRACE ELASTIC



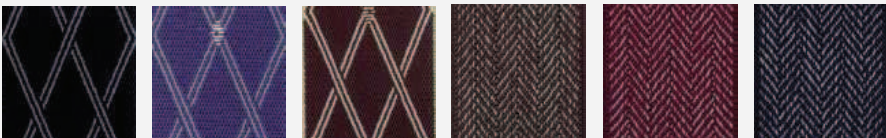
B51A B51B B51C B51D



B45A B45B B45C B45D



B58A B58B B58C B57A B57B B57C



B56A B56B B56C B52A B52B B52C



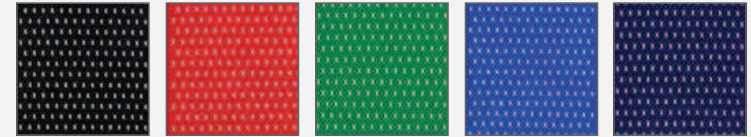
B65A B65B B65C B68A B68B B68C



B5A B5B B5C B5D B5F



B49A B49B B49C B49D B49E



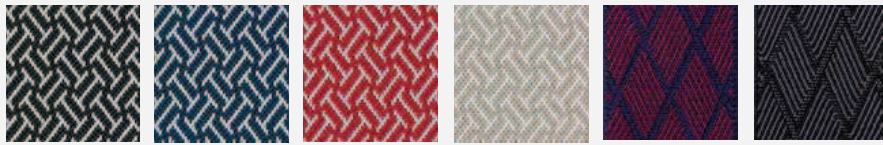
B50A B50B B50C B50D B50E



B60A B60B B60C B60D B60F



B67A B67B B64A B66A B66B



B62A B62B B62C B62D B55A B55B

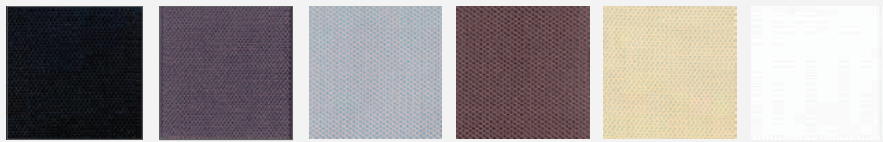


B61A B61B B61C B61D B63A B63B



B43A B43B B43C B43D B53A B53B

PLAIN COLOURS



BLACK GREY 35mm only LIGHT GREY 35mm only KHAKI 35mm only BEIGE 35mm only WHITE



OLIVE 35mm only BOTTLE GREEN 35mm only NAVY ROYAL 35mm only BURGUNDY 35mm only RED

STEP 4

CODE LOOK UP

ALL BRACES ARE AUSTRALIAN MADE AND USE BELGIAN ELASTIC

PLAIN

Back	Width	Sizes available	Clips	Code	Colours
X	25mm	See 'fitting table' below	Nickel clips	BRPLAI25X	Make your selection from page 32
X	35mm		Nickel clips	BRPLAI35X	
X	35mm		Button ends	BRBUTT35X	
Y	35mm		Nickel clips	BRPLAI35	
Y	35mm		Button ends	BRBUTT35	

STRIPES

Back	Width	Sizes available	Clips	Code	Colours
X	25mm	See 'fitting table' below	Nickel clips	BRSTRI25X	Assorted stripes
X	35mm		Nickel clips	BRSTRI35X	
X	35mm		Button ends	BRBUTS35X	
Y	35mm		Nickel clips	BRSTRI35	
Y	35mm		Button ends	BRBUTS35	

PATTERNS

Back	Width	Sizes available	Clips	Code	Colours
X	35mm	See 'fitting table' below	Nickel clips	BRFANC35X	Assorted patterns or Make your selection from pages 30-32
X	35mm		Button ends	BRBUTF35X	
Y	35mm		Nickel clips	BRFANC35	
Y	35mm		Button ends	BRBUTF35	

STEP 5

ORDER YOUR SIZE

Size	Measurement
One size (M-2XL)	Adjustable to fit 42" to 50"
3XL	Add 2" to one size fitting
4XL*	Add 4" to one size fitting
5XL*	Add 6" to one size fitting
6XL*	Add 8" to one size fitting
7XL*	Add 10" to one size fitting

Our measurements are taken from the front of the waist, over the shoulder to the back of the waist.

*Sizes 4XL to 7XL incur additional charges. Please see wholesale price list for details.



EXAMPLE OF PACKAGING